

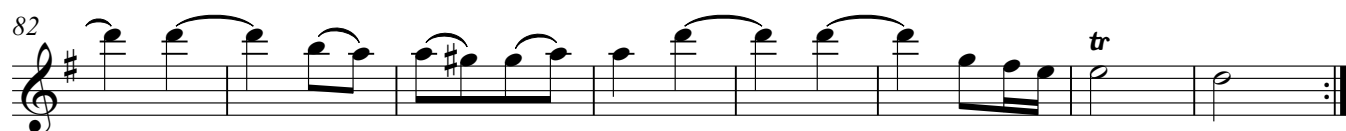
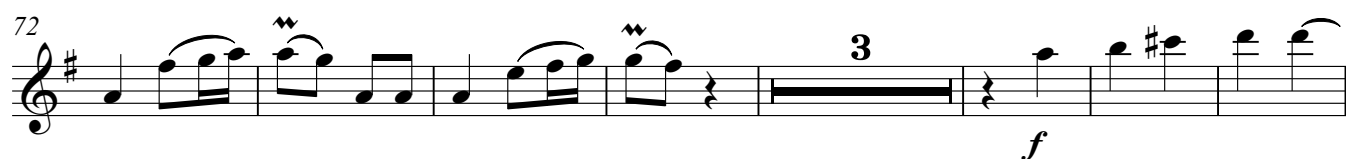
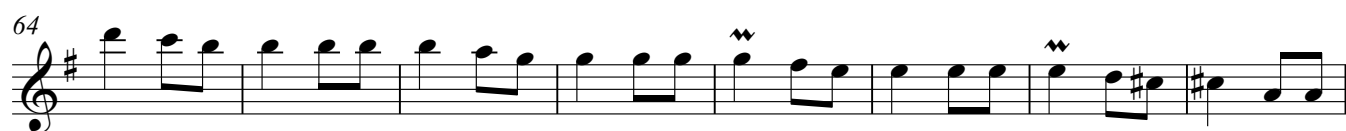
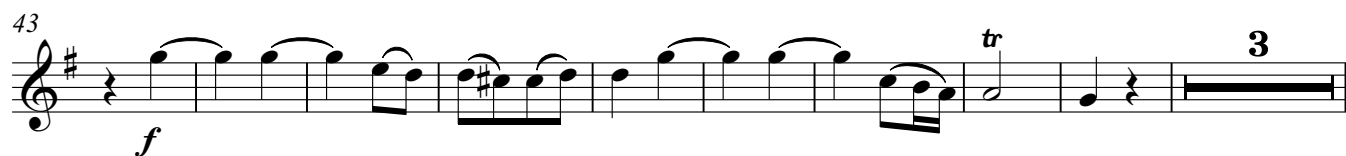
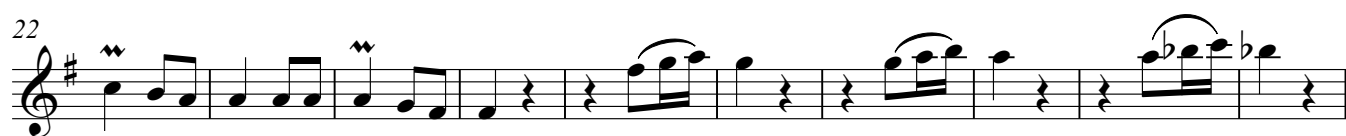
Sonata in Sol

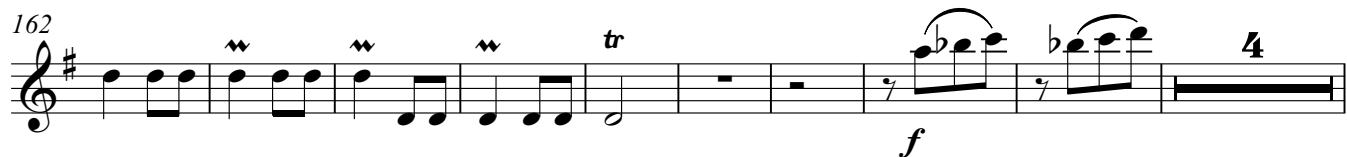
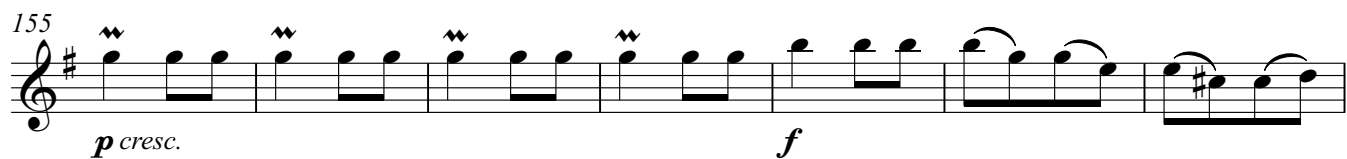
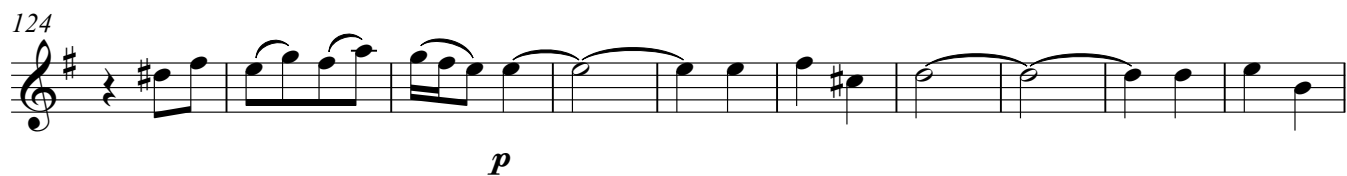
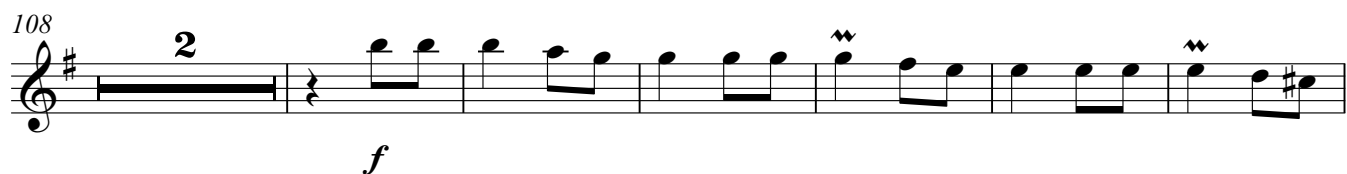
GT 5.G01

Giuseppe Tartini

arr. Anna Molaro

Presto





3 C 3

Andante

This section of the musical score, marked 'Andante', spans measures 1 through 37. It is written in a single staff with a key signature of two flats (B-flat and E-flat) and a common time signature (C). The tempo is indicated by the word 'Andante'. The music features a variety of rhythmic patterns, including triplet eighth notes, quarter notes, and eighth notes. Dynamic markings include *p* (piano) and *f* (forte). Ornamentation is used in several places, with wavy lines above notes in measures 3, 5, 10, 12, 20, 22, 24, 26, 30, 32, and 34. Trills are marked with 'tr' in measures 7, 13, and 36. Measure numbers 9, 14, 24, 28, 32, and 37 are placed at the beginning of their respective lines. The section concludes with a double bar line in measure 37.

Allegro assai

This section of the musical score, marked 'Allegro assai', spans measures 1 through 10. It is written in a single staff with a key signature of one sharp (F-sharp) and a 3/4 time signature. The tempo is indicated by the word 'Allegro assai'. The music consists of eighth and quarter notes, with a triplet of eighth notes in measure 1. Dynamic markings include *f* (forte) in measure 1. Measure numbers 10 and 1 are placed at the beginning of their respective lines. The section concludes with a double bar line in measure 10.

